

GOOD PRACTICES IN PRE-PROCESSING CENTRES

Wear clean uniform, gloves, gum boots, head gear and mouth piece while working in PPC



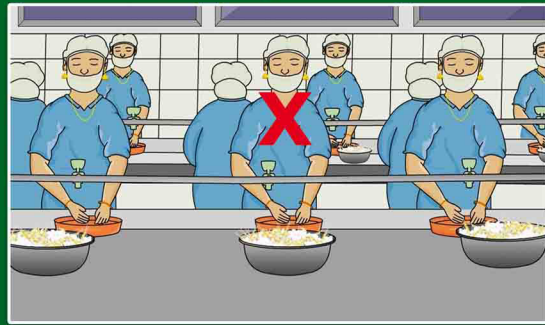
Wash hands and legs with detergent and water while entering the peeling hall



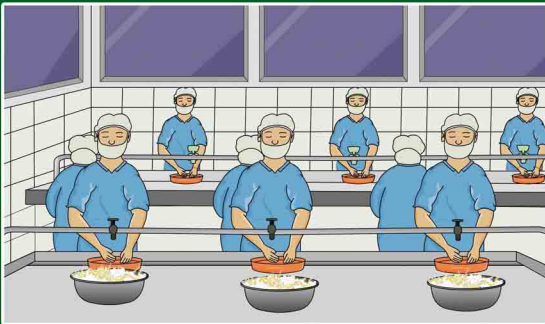
Use hand-dips & foot-dips periodically for disinfection



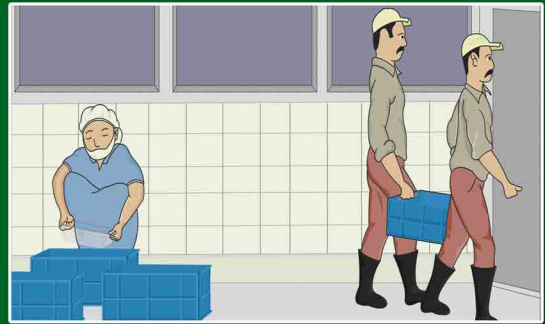
Avoid wearing ornaments and using nail polish while working



- ❖ Peeling should be done only on stainless steel tables
- ❖ Use enough ice while peeling



Peeled materials should be washed properly in clean potable water and transfer immediately to the chill room



- ❖ All utensils used in the ppc should be washed properly and disinfected
- ❖ Wash the floor, walls, tables and utensils thoroughly with detergent, water and chlorinated water before and after each peeling schedule



Network for Fish Quality Management & Sustainable Fishing (NETFISH)

MPEDA, Ministry of Commerce & Industry, Govt. of India
Vallarpadam PO, Cochin-682 504
www.netfishmpeda.org

