

GOOD PRACTICES ONBOARD FISHING VESSELS

Wash deck, fish hold and other contact surfaces with detergent and clean water



Store enough good quality ice in the fish hold before going for fishing



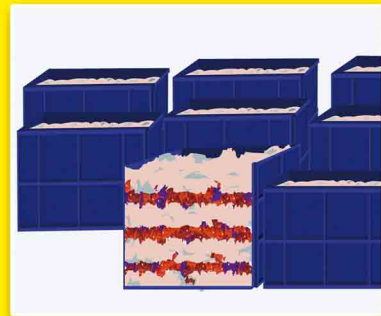
Carry necessary equipments while going for fishing



Clean fishing nets in sea water by simply towing when away from the harbour



Fish should be sorted immediately and iced in crates in 1:1 ratio



Transfer iced crates immediately to the fish hold



Wear clean gloves while sorting fish



Fish should not be handled with leg



Clean deck and other surface immediately after each operation



**Do not use pan masala, cigarettes onboard fishing vessels
Observe strict personal hygiene & sanitation onboard vessels**



Network for Fish Quality Management & Sustainable Fishing (NETFISH)

MPEDA, Ministry of Commerce & Industry, Govt. of India
Vallarpadam PO, Cochin-682 504
www.netfishmpeda.org

